

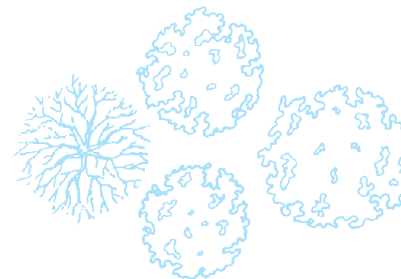
SPRINT 3000 HIGH-SPEED INDUSTRIAL DOOR



The Roller Door with DiscDrive Technology

- **DiscDrive winding mechanism limits noise and wear - Unique design for long term constant use**
- **Reduced crash damage thanks to flexible and hingeless connected profiles**
- **High safety level due to the patented pre-running non-contact sara safety beam**

**SARA HIGH-SPEED SPRINT DOORS
'DEFINE THE STANDARD'**



High-Speed Industrial Door Sprint 3000

Technical data

Internal door:	suitable
External door:	suitable
Wind resistance:	class 3, EN 12424
Clear opening size (mm):	W min.: 1250 W max.: 5000 H min.: 2500 H max.: 5000

Control

Control system:	ACS 80 frequency converter
Opening/Closing speed:	2.5 / 0.7 m/s
Electrical supply:	3/(N)/PE 400V ± 10%, 50/60Hz

Fuse protection in control box:	10A
Control voltage :	24V DC
Protection :	IP 55
Dual opening heights:	available
Potential free contacts max. 250V:	optional
Motor power:	1.1kW
Size of control box (mm):	500 x 500 x 210

Diagnostic control box:	plain text
Direct drive:	electrically
Running direction:	vertically
Opening frequency in continuous operation, ≤ 2 each minute:	included
> 2 each minute:	optional

Traffic light options

Pre-run time control system	
- without direction detection:	optional
- with direction detection:	optional
Flashing alarm light:	optional

Appearance

Door curtain profiles:	anodised aluminium
Other metal parts:	galvanised steel
Side columns:	galvanised steel
Top roll:	steel
Cover top roll:	on request
Motor cover:	optional

Door curtain profiles

Door curtain profiles with windows:	optional
Door curtain profiles coloured:	on request

Safety

Pre-running non-contact sara safety beam:	included
Safety photocell stationary:	included
Curtain tension:	included
Counterbalance:	included
Anti-fall protection:	tension springs, multi redundant
Emergency self opening:	included

Advantages of **sara** Sprint 3000:

- a simple and resourceful DiscDrive mechanism limits noise and wear
- reduced crash damage thanks to flexible and hingeless connected profiles
- patented pre-running non-contact **sara** safety beam

Applications

Aluminium Sprint high-speed roller door, vertically running, as internal/external closure for frequent openings.

General description

sara doors are developed and tested to use in many doorways. Particularly suitable for fork lift truck traffic with remote control activation. Helps to eliminate draughts, reduce energy loss, limits vermin ingress, improves cleanliness and security and reduces noise.

Design

The door curtain consists of single aluminium profiles, each hingeless connected, by means of flexible laterally high performance tension elements. This allows longer intervals between services. The flexible connection eliminates the potential of damaged hinges. The top ends of the tension elements are connected on both sides with the DiscDrive, which allows a touchless winding of the door profiles. The side frames and crossbars are galvanised steel. All side frame elements are pre-mounted as well as the top roll with the curtain (profiles).

Door curtain / Curtain tension

The door curtain consists of anodised aluminium profiles. Each profile is independant and quick and easy to replace. A constantly acting curtain tension provides a smooth and steady-going movement.

Drive unit

Left or right hand motor as required.

Control box

ACS 80 – see technical data.

A 5000mm control cable is supplied with the box as standard.

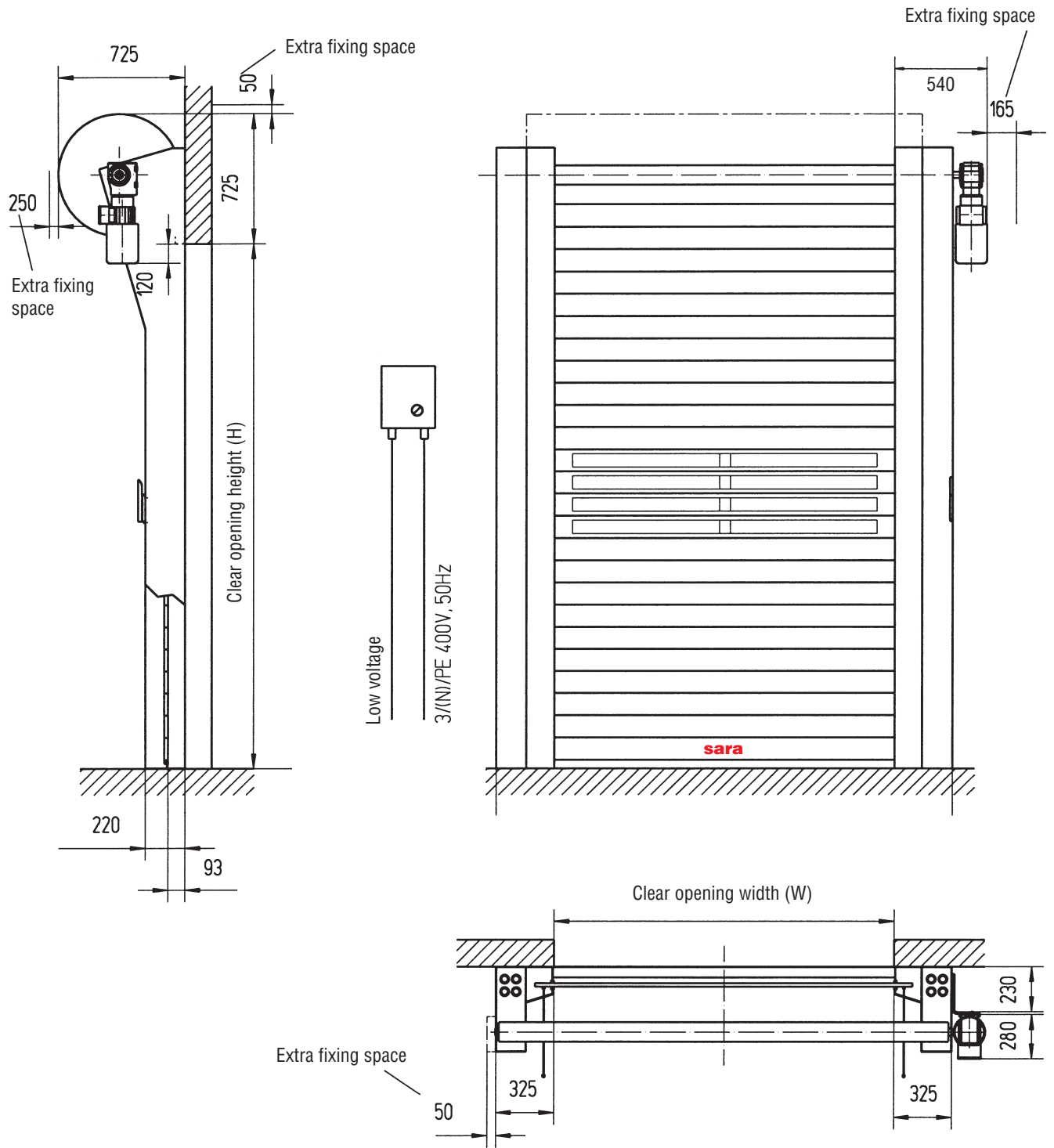
Safety features

This door conforms with the harmonised CE Guidelines including the prEN 13241.

Manual activation

In the event of a power failure, the door can be opened by releasing the brake manually. Depending on the width/height ratio, the door opens partly by means of tension springs.

General Drawing Sprint 3000

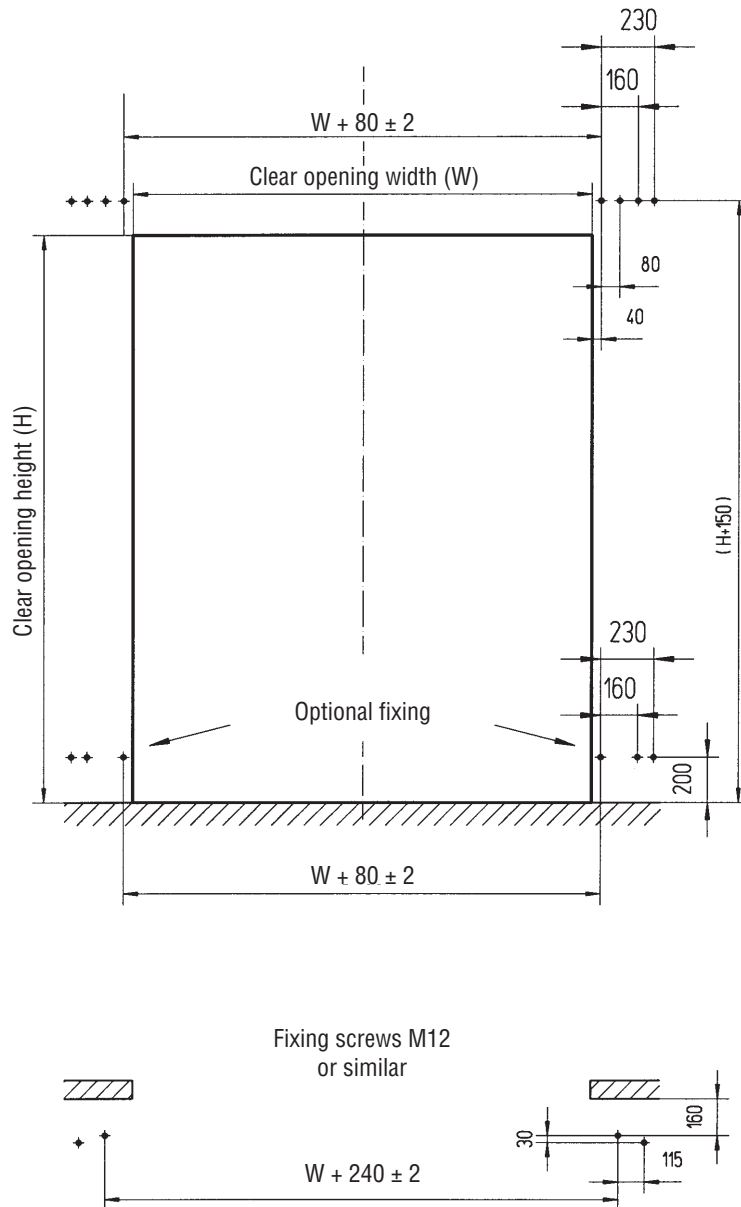


Control	ACS 80
Opening Speed up to [m/s]	2.5
Closing Speed up to [m/s]	0.7

Available sizes

W min	1250	W max	5000
H min	2500	H max	5000

Fixing Detail Sprint 3000



sara®

sara/Loading Bay Specialists Limited
 4 Garnett Close, Greycaine Estate, WATFORD, Herts. WD24 7JX. England.
 Telephone: 01923 208888 Fax: 01923 208899
 Email: Info@saralbs.co.uk Web: www.saralbs.co.uk
 All specifications subject to change without notice.



Association of Loading and Elevating Equipment Manufacturers.

