

SPRINT 392 HIGH-SPEED INDUSTRIAL DOOR



**FULL-VISION HIGH-SPEED DOOR
FOR FREQUENT TRAFFIC**

LARGE SIZE RANGE

DUAL OPENING HEIGHTS OPTION

WIDE RANGE OF CONTROL OPTIONS

**SELF-OPENING IN CASE OF
POWER FAILURE**

**GALVANISED STEEL SIDE COLUMNS FOR
GOOD LOOKS AND LOW MAINTENANCE**

sara PRODUCTS DEFINE THE STANDARD

Sprint 392 high-speed industrial door



Sprint 392 high-speed industrial door

High-speed roller doors with transparent door curtain providing excellent visibility for safety and daylighting.

Fast action minimises heat loss and draughts, and protects against vermin, insects and noise.

Applications

Internal or external use for all types of industrial access, especially where frequent operation is required, eg forklift truck operations.

Features

Large size range up to 6m x 6m.
Good wind resistance: Class 2 to EN 12424.
Wide range of control and activation systems.
Self-opening in case of power failure.
Automatically closes with timed delay.

Authority

The door conforms with the applicable harmonised CE guidelines including EN 13241.

Other door types

Other Sprint door models are available in other size ranges and options.

Other types of **sara** industrial door are available to provide thermal insulation or fire protection.

Materials and manufacture

Door curtain: transparent PVC with coloured reinforcing strips, which rolls onto a barrel of aluminium (width up to 4.5m) or primed steel (width over 4.5m). Anodised aluminium bottom rail. Curtain edges reinforced with wind tabs which are gripped in the side columns.

Side columns: self-supporting, galvanised steel, containing curtain tensioning springs and counterbalancing weights.

Drive: robust geared electric motor.

Options

Galvanised steel barrel cover and plastic motor cover.

PVC curtain with silicon-free reinforcing strips in blue or black.

Rolltex fabric curtain, with or without vision panels.

Sizes

Clear opening size to order within the following limits:

Width 2000mm to 6000mm.

Height 2000mm to 6000mm.

Appearance

Curtain reinforcing strips blue or red as standard. Other colours available as options.

Side columns galvanised. Bottom rail natural anodised.

Standard safety features

Contact safety edge

If the bottom edge of the closing door meets an obstruction it automatically reverses to fully open.

Stationary photocell

In addition a stationary safety photocell beam in the side columns automatically sends the door to the fully open position if the doorway is obstructed.

Emergency opening

In the event of power failure, the door can be opened by releasing the brake manually.

The door opens fully or partially, depending on the width/height ratio, and can easily be pushed fully open by hand if necessary.

Knock-out facility (optional)

If there is an impact on the bottom rail, the rail and curtain break out of the side column guides and the door stops automatically.

Operating speeds

See table below.

Control and activation

Manual control panel with push-button controls and cycle counter is standard.

Diagnostic text display on ACS 80 system.

Automatic time delay closing is standard for all control systems.

Options

Up button on reverse side of doorway.

A range of automatic and remote activators including induction loops, photocells, radio/infrared transmitters, movement sensors, pull cords and card readers.

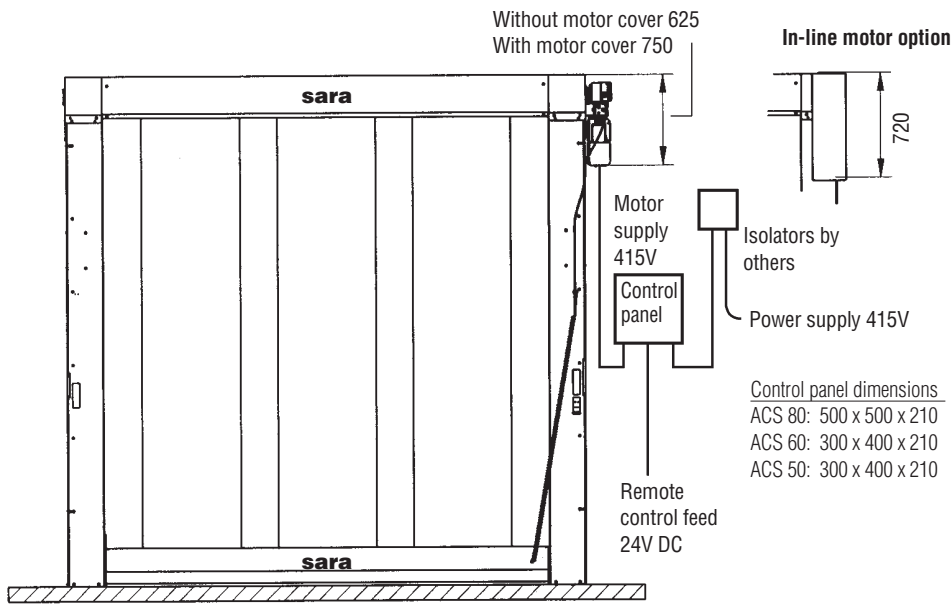
Klaxons, xenon beacons, and traffic lights with or without direction detection.

Dual opening heights option: reduced for normal use, with full height opening for occasional large vehicles.

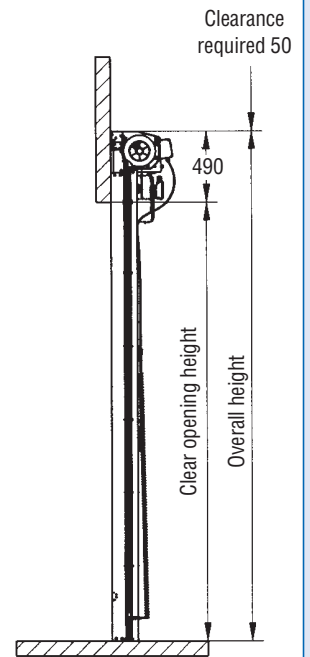
Control and electrical data

Control system	ACS 80	ACS 60	ACS 50
Opening speed	2.5m/s	2.5m/s	0.8m/s
Closing speed	0.8m/s	0.8m/s	0.8m/s
Dual opening heights	optional	n/a	n/a
Power supply	3 phase 415V 50/60Hz	3 phase 415V 50/60Hz	3 phase 415V 50/60Hz
Fuse protection	10A	6.3A	6.3A
Control voltage	24V DC	24V DC	24V DC
Protection	IP 54	IP 55/65	IP 55
Motor power	1.1kW	1.1kW	1.1kW

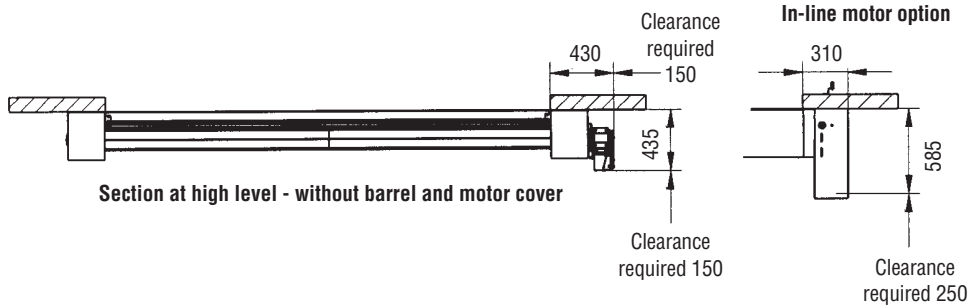
Sprint 392: General dimensions



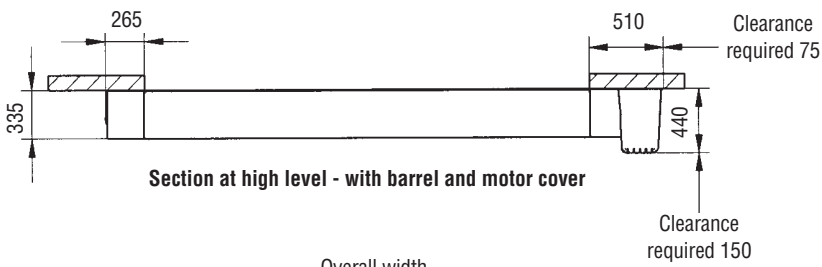
Elevation - direct drive



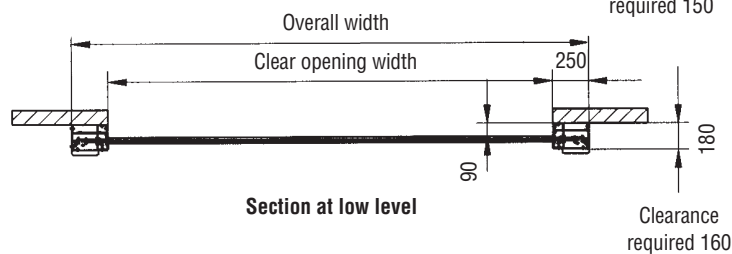
Vertical section - without barrel and motor cover



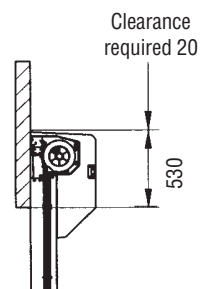
Section at high level - without barrel and motor cover



Section at high level - with barrel and motor cover



Section at low level



Vertical section - with barrel and motor cover

Notes

Motor on right hand side is standard. On left to order.

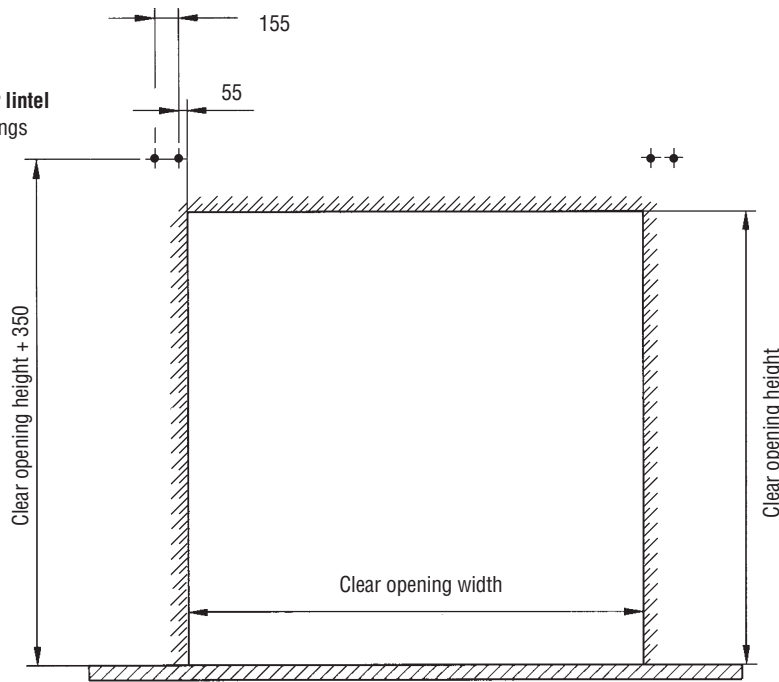
For fixing positions see drawings overleaf.

To allow optional knock-out facility to operate, door width must be less than or equal to clear structural opening width.
5m control cable is standard.

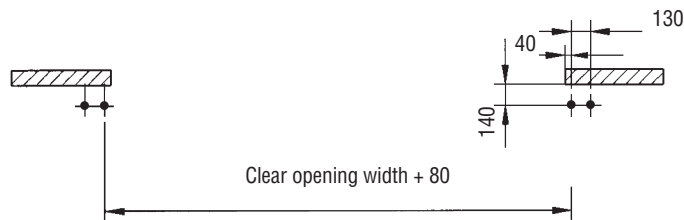
All dimensions are mm

Sprint 392: Fixing positions

Fixing positions - over lintel
Use M12 or similar fixings



Fixing positions - floor
Use M12 or similar fixings



Notes

Fixing to steel frame (by others) requires minimum 250mm width fixing face.

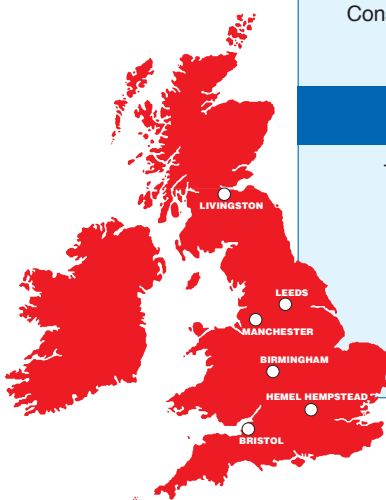
All dimensions are mm

Please contact your **sara** Technical Salesman, who will be happy to discuss your requirements. The **sara** Sprint high-speed doors selector will help to identify the model appropriate to your project. Door demonstrations and site visits can also be arranged. Construction drawings and technical specifications (hard copy or disk) can be supplied on request.

THE TOTAL PACKAGE

To complement the extensive range of high-speed doors we offer a total package of products including:

- INDUSTRIAL DOORS**
- SCISSOR LIFT TABLES**
- DOCK LEVELLERS**
- DOCK SEALS**
- LOADING RAMPS**



sara®

Registered Trade Mark of Loading Bay Specialists Ltd.

sara/Loading Bay Specialists Limited

4 Garnett Close, Greycaine Estate, WATFORD, Herts. WD24 7JX. England

Telephone: 01923 208888 Fax: 01923 208899

Email: info@saralbs.co.uk Web: www.saralbs.co.uk

